



## **Orbit II Stand Alone CD Disc-to-Disc Office Copier**



### **Reference Manual**

Revision J

## **Orbit II Stand Alone 52X CD-to-CD Office Copier with Burn Proof**

### **Table of Contents**

Section 1 Introduction:	3
Section 2 Setting Up your CD-R Copying Area:	4
Section 3 CD-R & CD-RW Media Recommendations:	5
Section 4 CD, CD-R, and CD-RW Master Considerations:	7
Section 5 Installation & Setup:	9
5.1 Inspecting the shipment for Damage	9
5.2 Unpacking the Orbit II and verifying shipment contents	9
5.3 Installing the Orbit II:	10
5.4 Initial Orbit II Copying System Checks:	13
5.5 Navigating the Orbit II Menu Tree:	13
5.6 Loading & Unloading CD-Rs:	17
5.7 CD-R Handling Tests:	22
5.8 Writer and Reader Test:	23
Section 6.0 Basic Orbit II Operations :	25
6.1 Copy DISCtoDISC?:	25
6.2 Copy DISCtoHDD?:	26
6.3 Copy HDDtoDISC?:	27
6.4 Copy and Compare?:	28
6.5 Compare CD?:	29
6.6 Copy CD+G	30
Section 7.0 Advanced Orbit II Operation:	31
Section 8 Maintenance	32
8.1 Routine Maintenance:	32
Section 9 Troubleshooting:	33
Section 10 Prior to Calling for Assistance	34
Section 11 References	35
11.1 Warranty	35
11.2 Technical Support Telephone #:	35
11.3 Regulatory Agency Approvals:	35
11.4 Specifications:	36
Attachment A Orbit II Error Messages	39

## Section 1 Introduction:

Thank you for purchasing this Microboards Technology Orbit II Stand Alone CD-to-CD Office Copier. Your new Orbit II System provides state of the art 52x duplication speed for both CD-Audio and CD-ROM discs. Orbit II also incorporates “Burn Proof” technology to prevent wasting CD-R media due to buffer under runs. We are confident you will be impressed with how easy it is to Setup and operate this unit. Your complete satisfaction is our primary goal, so please contact our Technical Services Group if you have any questions, comments, or suggestions.

The Microboards Technology Orbit II is a stand-alone CD-to-CD Office Copier designed to feed up to 50 CD-Rs or CD-RWs into its CD-R/CD-RW Writer. With your Orbit II you can record all common CD-Audio or CD-ROM formats, and accumulate accepted or rejected discs without operator attention. (See section 11.4 *Specifications* for a list of CD formats supported by your new Orbit II.) The Orbit II is designed for ease of use in an office copier environment. The Orbit II is so easy to use its basic operating instructions are contained on a single page. Your system includes a copy of the basic operating instructions that you can hang on a wall near the unit.

The Orbit II has an internal hard drive that stores up to 10 different images.

The Orbit II Stand Alone CD-to-CD Office Copier is the ideal solution for users who require unattended copying of all common CD formats. Because it is a stand-alone system, Orbit II does not require the support of a personal computer. Orbit II CD-to-CD Copier users do not need computer skills. If you can use a paper document copier, you can use an Orbit II.

All Microboards Technology CD-R Systems share disc singulation components; and use industrial grade CD-R/CD-RW Writers and Readers, control keypads, and LCD displays. Because it is based upon Microboards Technology Professional Series Systems, your Orbit II will provide years of trouble-free service, even if you use it continuously.

Your Orbit II can use CD, CD-R, or CD-RW discs as masters. It can copy your masters on to blank CD-R or CD-RW discs. If you use CD-RW discs they must be blank. Orbit II cannot erase, or over-write, CD-RW media. Pre-written CD-RW discs will be placed on the Reject side.

**We at Microboards Technology strongly discourage the illegal copying of content in violation of copyright laws. Our equipment will not defeat copy protection. Make sure the copies you produce conform to copyright regulations, and function properly in target systems, before you distribute them.**

## Section 2 Setting Up your CD-R Copying Area:

A clean and orderly work place is required to consistently produce high quality copies. We suggest you locate your Orbit II Stand Alone CD-to-CD Office Copier in an office like environment free of dust and debris. Any contamination that gets on the CDs, CD-Rs, or CD-RWs you use as masters or blanks can cause rejects that will reduce your yield and increase your cost. Even worse than yield loss is the possibility that a CD-R you duplicate will not work in your customer's CD Drive. Dust and debris will also increase Orbit II system maintenance, and possibly shorten the service life of your Orbit II CD-to-CD Office Copier

After you have selected a clean working environment for your Orbit II, you should allow enough tabletop space around the unit to properly organize the flow of masters, blank media, duplicated discs, and process rejects. In the example photograph below, workflow is from right to left. Blank discs waiting for copying are on the right of the Orbit II, along with a clearly labeled container for rejects. Completed copy jobs and masters are to the left of the Orbit II. Remember; it is sometimes difficult to tell if an unlabeled CD-R has been duplicated. It is virtually impossible to identify the content of a duplicated CD-R until it is labeled or printed. An organized workspace is the key to controlling the quality and consistency of your CD-R copy process.

Temperature in your CD-R copy area should be between 65 and 85 degrees F. (18 – 29 degrees C.) Humidity should be maintained between 30 and 80 % RH, if possible. CD-R copying can be performed outside these recommended limits, but operator comfort and process yield may be affected.



In our sample CD-R copying Setup above we are keeping each completed copying job on a separate spindle, with the master disc on top of the stack. This keeps the master available for quality control "compare" tests. The master also clearly identifies the contents of each stack.

### **Section 3 CD-R & CD-RW Media Recommendations:**

By selecting a Microboards Technology Orbit II CD-to-CD Office Copier, you have purchased the finest CD-R Copying hardware and operating system available. The second most important choice you will make is selecting the media to use in your copying process. This section provides a brief overview of media and presents our recommendations for media selection.

When CD Recordable technology was introduced there were only two dye formulations, cyanine and pthalocyanine, and all CD-Rs had gold reflecting layers. Your basic media color choices were “green” or “gold”. Most of the discs sold were “branded”, which means they carried the name of their manufacturer or distributor. These early CD-Rs were expensive, and there were durability and interchange concerns. Today there is a third dye formulation called AZO, reflecting layers may be either gold or silver (sometimes called “platinum”), shades of blue have been added to the spectrum of colors, and “bulk” packaging has joined branded product on dealers shelves. The term “bulk packaging” refers to CD-Rs that are sold on a shrink-wrapped spindle rather than in individual packages. Bulk packaged CD-Rs do not usually carry their manufacturer’s name. Unidentified bulk packaged CD-Rs are usually cheaper than branded products. The most expensive media is individually packed in jewel cases and labeled with the manufacturers name.

Recently, CD-RW (re-writeable) media has joined the CD product family. Re-writeable discs use a different recording technology than write once CD-Rs. Because of this they are more expensive, record at lower speeds, and may not function properly in older CD-Audio or CD-ROM Drives. Many CD-RW discs are written in a format called “packet writing” which the Orbit II does not support. You may use CD-RW discs that are not packet written as masters for your Orbit II Copying System, but make sure you understand their limitations before you duplicate blank CD-RW discs. (Special note, Orbit II will detect CD-RW media and automatically select the proper writing speed.)

The growth of CD-R and CD-RW usage has lured new vendors into the marketplace. Some of these newer manufacturers may not have the manufacturing experience, or quality control procedures, required to assure consistent recording and playback performance. The CD-R media recommendations that follow will help you select CD-Rs that will maintain a consistent copying process and minimize your production costs.

If your new Orbit II is your first CD-to-CD Office Copier, obtain a quantity of branded discs from a manufacturer you know or is recommended to you. At this point, do not worry about the cost of the CD-Rs. You will be using them to establish a performance reference for your copying process. We suggest you obtain at least 50 of these branded CD-Rs. If you have previous CD-R copying experience select 50 CD-Rs from a manufacturer you have had good results with in the past. If you need assistance in selecting a reliable media source, contact the Microboards Technology Support Department.

Use this group of CD-Rs as you follow the sections of this manual that cover setting up and using your new Orbit II Copying System. The sequence we provide will show you how to qualify the mechanical performance, recording performance, and playback performance of this sample group. After samples from this initial group of CD-Rs have completed the qualification procedure, you should set the remaining discs aside as a media reference. If you encounter copying problems you can use a CD-R from your reference group to determine if you have a media or an equipment problem. A known good reference CD-R will be your basic troubleshooting tool.

Our recommended media qualification procedure includes copying, comparing, and testing on target systems. After you have established your reference media you may continue to use that manufacturer’s product, or you may qualify other sources using the same procedure.

### Section 3 — CD-R Media Recommendations: (cont.)

Although you cannot select CD-R media based upon color alone, there is a correlation between “reflectivity” and media performance. The CD or CD-R drives that read the CD-Rs you duplicate project a laser beam through the thickness of the plastic disc. The laser beam is reflected by the metallic coating on the back of the CD-R and returns through the thickness of the plastic to the drive’s optical detector. For CDs, the minimum reflectivity specification is 70%. CD-Rs are permitted to have slightly less reflectivity. Their minimum specification is 65%. Hold a commercial CD up to a light. Place your fingers a few inches behind the CD. You will typically not be able to see the shadow of your fingers looking through a CD. For CD-Rs to work in a large number of CD or CD-R drives they should have similar reflectivity and opacity. Reflectivity and opacity become increasingly important as read drive speeds increase. A modern 52x read drive requires more reflectivity than an 8X read drive. It is best to avoid CD-Rs that are less reflective and/or opaque than the CD-Rs you are using as your reference sample.

CD-RW media has about ½ of the signal strength of CD-R media, even though they may appear to be highly reflective. The lower signal strength of CD-RW media is one of the reasons they may not work in older CD-Audio, CD-ROM, or CD-R Drives. Recognizing the need for CD-RW compatibility, Compact Disc media and drive manufacturers met and established a specification that is intended to assure CD-RW interchange capability. Products compliant with this new specification carry a “MultiRead” qualified label on their faceplate, or in their product manual. CD-RW media should only be used in CD-Audio, CD-ROM, CD-R, or DVD Drives that have MultiRead certification.

## Section 4 CD, CD-R, and CD-RW Master Considerations:

A “master” is the CD, CD-R, or CD-RW disc you are making a duplicate of. There are ethical as well as functional considerations in the selection and use of masters. We at Microboards Technology discourage the unauthorized copying of proprietary material. Our copying systems will not defeat copy protection schemes. If you try to duplicate copy protected material, the Orbit II may either not read the master in, or may read the master in but produce copies that are not readable in a “target” system. If you have problems duplicating a CD or CD-R, one of the possibilities is the presence of copy protection. Try duplicating a master that does not have copy protection before assuming there is something wrong with your Orbit II Copy System.

There are a large number of formats included in the various “color books” that define CD technology. The simplest and most common forms are CD-Audio discs, that contain only music, and CD-ROM discs which contain only computer data. There are CD formats for specific games, Karaoke, video, graphics, and photographs. It is also possible to combine different formats on one CD or CD-R. Examples include CD-Audio albums with computer video, and CD-ROMs with audio and video tracks. Section 11.4 *Reference Information – Specifications* lists the formats supported by the Orbit II Stand Alone CD-to-CD Office Copier.

You may be generating your own masters, or providing a copy service using masters supplied by your customers. In either case you should be aware of the possibility that a master does not conform to all of the requirements of the appropriate format specification. There are many pre-mastering software packages that allow users to assemble their own CD-Rs. Most CD-R Writers sold as computer peripherals include some form of pre-mastering software. The most common problem we have seen is creating a master using the “back up” utility that comes with most CD-R Writers, instead of the “pre-mastering” utility. Back Ups are intended for one purpose only, to be restored by the same utility that created it. Back up utilities, and many file copy utilities, write small quantities of information called “packets” to the CD-R. This makes the CD-R act like a floppy diskette or hard disk drive. **Packet written discs are not suitable for use as masters on your Orbit II CD-to-CD Office Copier.** Your Orbit II will only duplicate masters that conform to all of the appropriate Color Book format requirements. Properly written CD-RW discs may be used as masters in Orbit II’s Reader or blanks in Orbit II’s Writer.

If you have problems reading in a master, the first thing you should do is read in a known good master. If your known good reference master reads in, the new master may have copy protection or format problems that the Orbit II will not tolerate. Try to redo, or ask your customer to redo, the master. Make sure all of the pre-mastering software instructions are understood and followed. If this does not solve your problem contact Microboards Technology Technical Services for assistance. We have equipment that can analyze any CD format and identify deviations from appropriate Color Book specification. Please note that there may be a charge for our CD analysis services.

Conscientious CD-to-CD Office Copier users implement a quality assurance program that typically includes the following steps. They follow this procedure before duplicating a large lot from a master they have not used previously.

1. Perform a virus scan on the master disc. (The Orbit II CD-to-CD Copier is virtually immune to viruses, but it could pass a virus through to the duplicates.)
2. Test the master disc on a target system:
  - Listen to an Audio Disc
  - Watch a Video CD
  - Test a CD-ROM on an appropriate PC
  - Verify the master disc’s content and version number
3. Make one duplicate of the master on the Orbit II
4. Using the Orbit II, compare the duplicate to the master disc.

5. Test the duplicate on a target system:
  - Listen to an Audio Disc
  - Watch a Video CD
  - Test a CD-ROM on an appropriate PC
  - Verify the master disc's content and version number

Steps 4. and 5. should be repeated, on a sample basis, during the production of each large lot of duplicates.

## Section 5 Installation & Setup:

The installation and Setup of a Microboards Technology Orbit II Stand Alone Copying System is so simple you may be tempted to proceed without referring to this manual. Unless you already use a Microboards Technology Copying System we suggest that you take the few extra moments required to follow our recommended unpacking, installation, and Setup procedure. During Orbit II CD-to-CD Copy System Setup you will learn how to use our menu driven operating system. You will use the control keypad to configure your Orbit II for basic copying and to determine if the unit has sustained any internal damage during shipment.

### 5.1 Inspecting the shipment for Damage

Your Orbit II CD-to-CD Office Copier is supplied in one shipping carton. If the outer carton shows signs of shipping damage, notify the shipping company immediately. They are responsible for the condition of the shipment. Contact Microboards Technology Technical Services Group prior to unpacking any equipment that is received in damaged shipping cartons.

If the shipping cartons do not show any signs of damage, unpack the Orbit II.

### 5.2 Unpacking the Orbit II and verifying shipment contents

The Orbit II shipping carton should contain the following items:

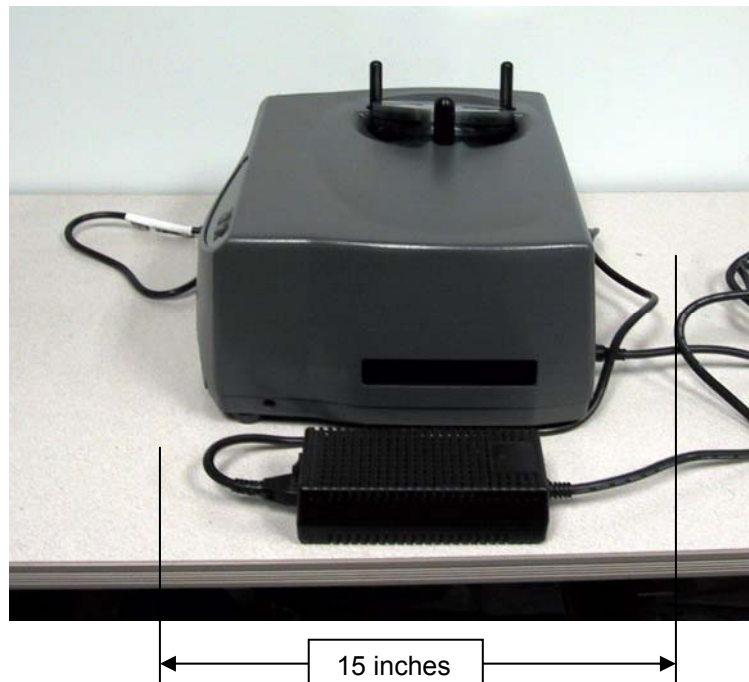
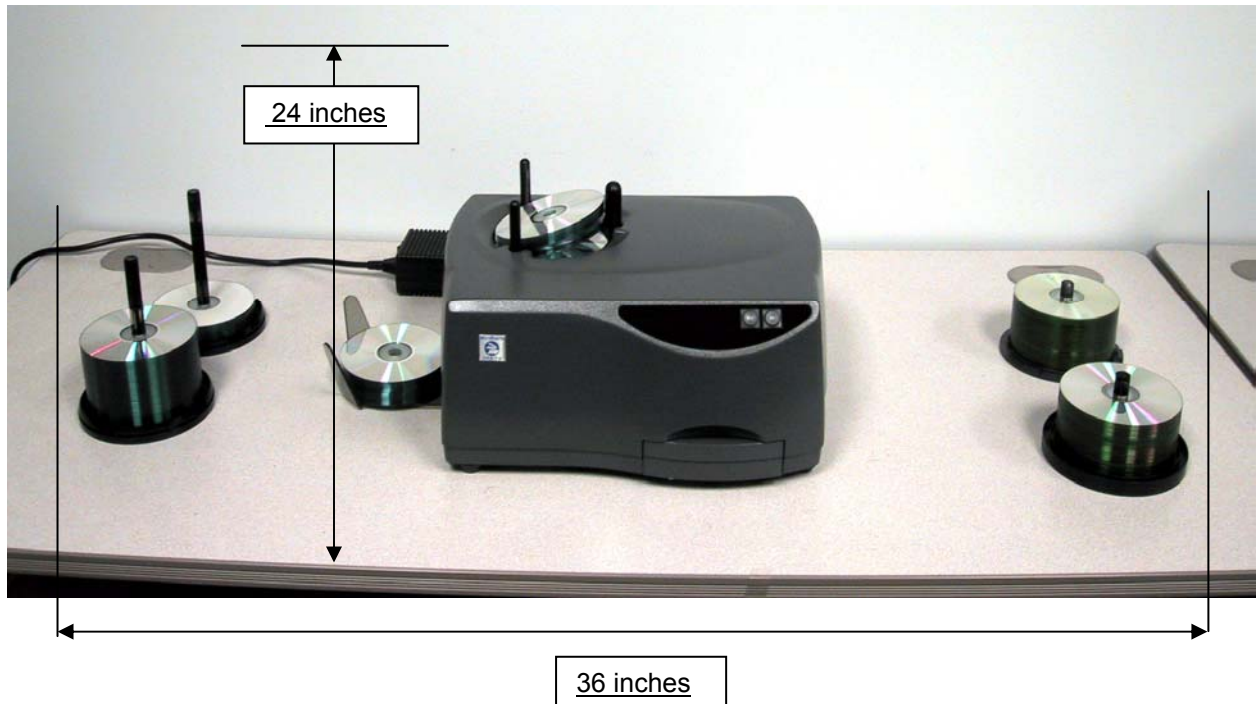
- Orbit II CD-to-CD Office Copier
- Orbit II external Power Supply
- An AC Power Cord
- Blank CD-R discs
- Starter Kit
- Surething Label Design Software

If any of these items are damaged or missing contact the Microboards Technology Technical Services Group.

**Save all of the Orbit II packaging material. You will need the packing material if you ever move your Orbit II, or have to send it in for servicing. Returning an Orbit II for servicing without its original shipping container will void your warranty!**

### 5.3 Installing the Orbit II:

- Prepare a properly sized workspace. Make sure you have cleared the area where your Orbit II CD-R / CD-RW copy system will be located. We recommend a desktop height surface, in an office-like environment, at least 36 inches wide and 18 inches deep. This will allow space on each side of the unit for blank media, masters, rejects, and processed discs. There should be at least 24 inches of clearance above the work surface.



### 5.3 Installing the Orbit II - cont:

- ❑ Place the Orbit II CD-to-CD Office Copier on the work space with its back panel accessible to you:
- ❑ Make sure the switch on the external Power Supply is OFF
- ❑ Insert the DC output connector of the external Power Supply in the rear panel DC receptacle



- ❑ Connect the external Power Supply to an AC Receptacle, but do not turn it on yet.
- ❑ Rotate the assembled Orbit II Copy System so its control panel is facing you, and position the Power Supply as shown in the photograph below.



### 5.3 Installing the Orbit II - cont:

- Slide out the Accept basket until it snaps into place.



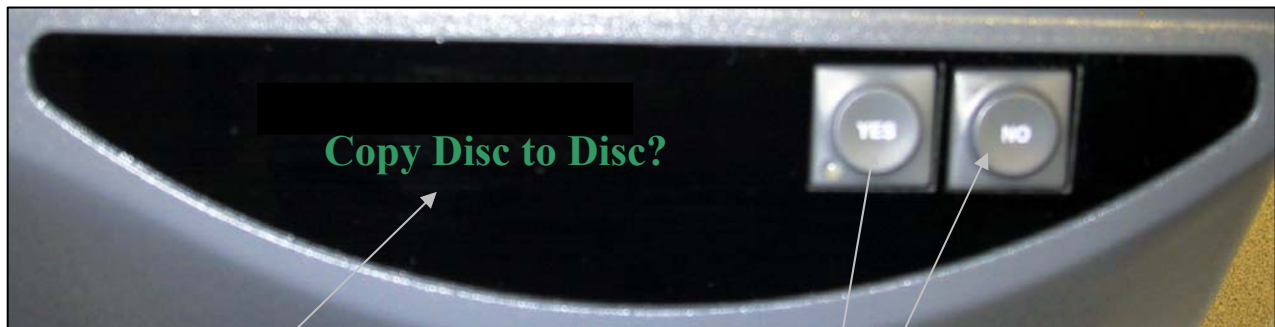
Your Orbit II Copy System is now assembled and ready for its initial system checks.

## 5.4 Initial Orbit II Copying System Checks:

- ❑ Turn Power On by operating the switch on the external Power Supply. The system's power on sequence will take a few seconds, but it should conclude with the display shown in the photograph below. If the **Copy CD-to-CD?** prompt appears, your unit's electronics are functioning properly. Proceed with step 5.5 *Navigating the Orbit II Menu Tree*.
- ❑ If you do not see anything on the display, check the external power supply connections. Make sure the red light on the external power supply goes on when you turn on the power switch. If the light does not go on, either the AC Receptacle you used does not have power, or the external power supply may be defective. Contact Microboards Technology Technical Support.
- ❑ If the display has any other message, or is unreadable, Contact Microboards Technology Technical Support.

## 5.5 Navigating the Orbit II Menu Tree:

This is the top level of the Orbit II operating system menu tree.



1 Line x 16 Character  
Display

2 Key  
Keyboard

**Orbit II Display and 2 Key Control Panel**

## 5.5 Navigating the Orbit II Menu Tree - cont:

### The two Orbit II control keys:

The two keys on the control panel provide access to all Orbit II functions.

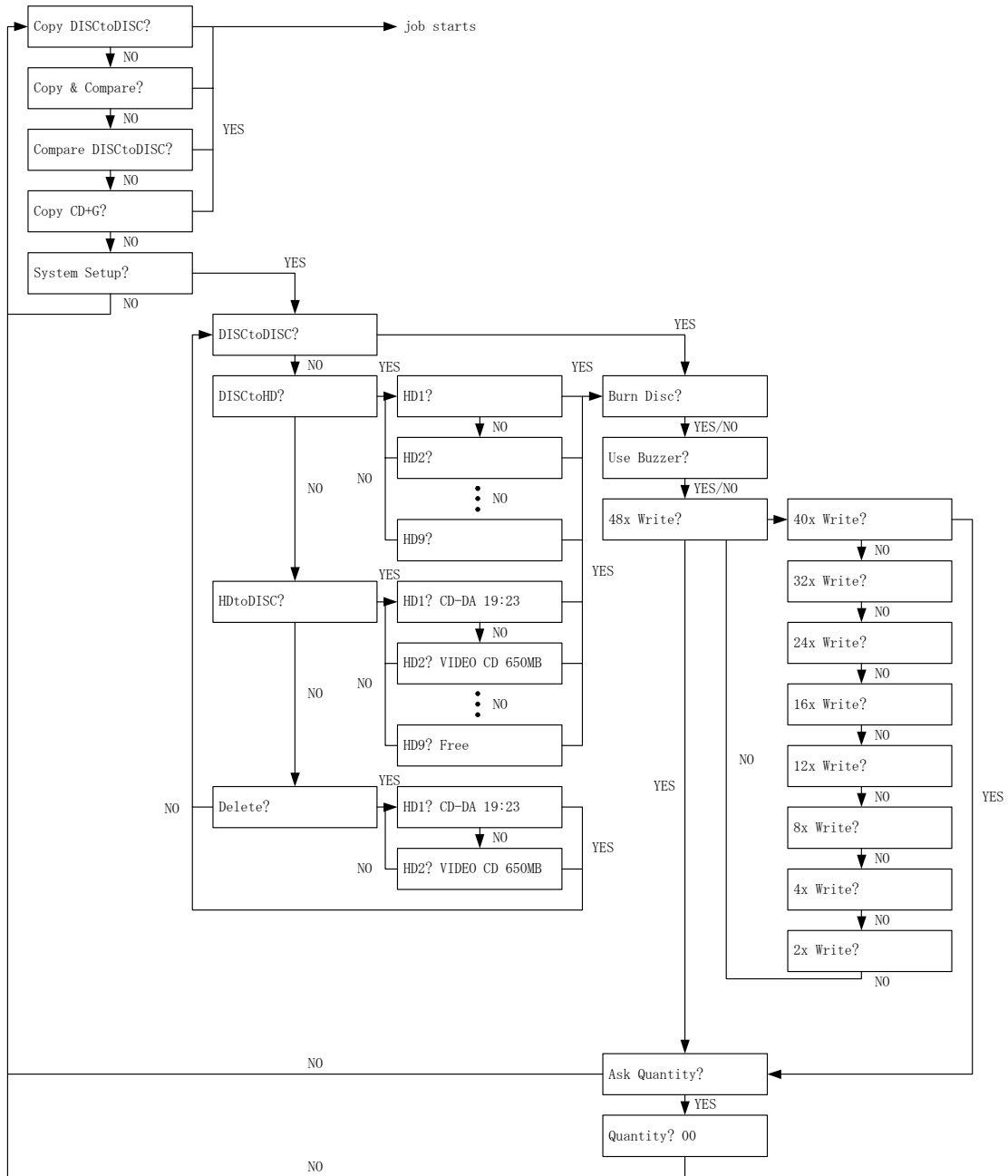
#### **Key #1 the Yes key:**

This key answers yes to the question displayed on Orbit II's one line display. For example, pressing the **Yes** key when **Copy CD-to-CD?** is displayed will initiate Orbit II's disc copy operation.

#### **Key #2 the No key:**

This key answers no to the question displayed on Orbit II's one line display. For example, pressing the **No** key when **Copy CD-to-CD?** is displayed will tell Orbit II you do not want to initiate a basic disc copy operation. The display will change to the next question in Orbit II's menu structure **Copy and Compare?**.

A diagram of the Orbit II Menu Tree is presented on the next page.

**Orbit II's menu structure:**


The **Burn CD?**, **Use Buzzer?**, **Write Speed?**, and **Ask Quantity?** options are described in Section 7.0 of this manual.

## 5.5 Navigating the Orbit II Menu Tree - cont:

The best way to become familiar with the Orbit II's menu driven operating system is to work with it. The sections that follow will teach you the basics of our operating system as you explore the features of the Orbit II, and prepare it for your CD-R Copying process. You can keep track of where you are by referring to the menu diagram that is on the previous page. If the Orbit II is not **On**, turn it **On** now. Your display should  prompt.

### Let's use the two control keys to start confirming the functionality of your new Orbit II:

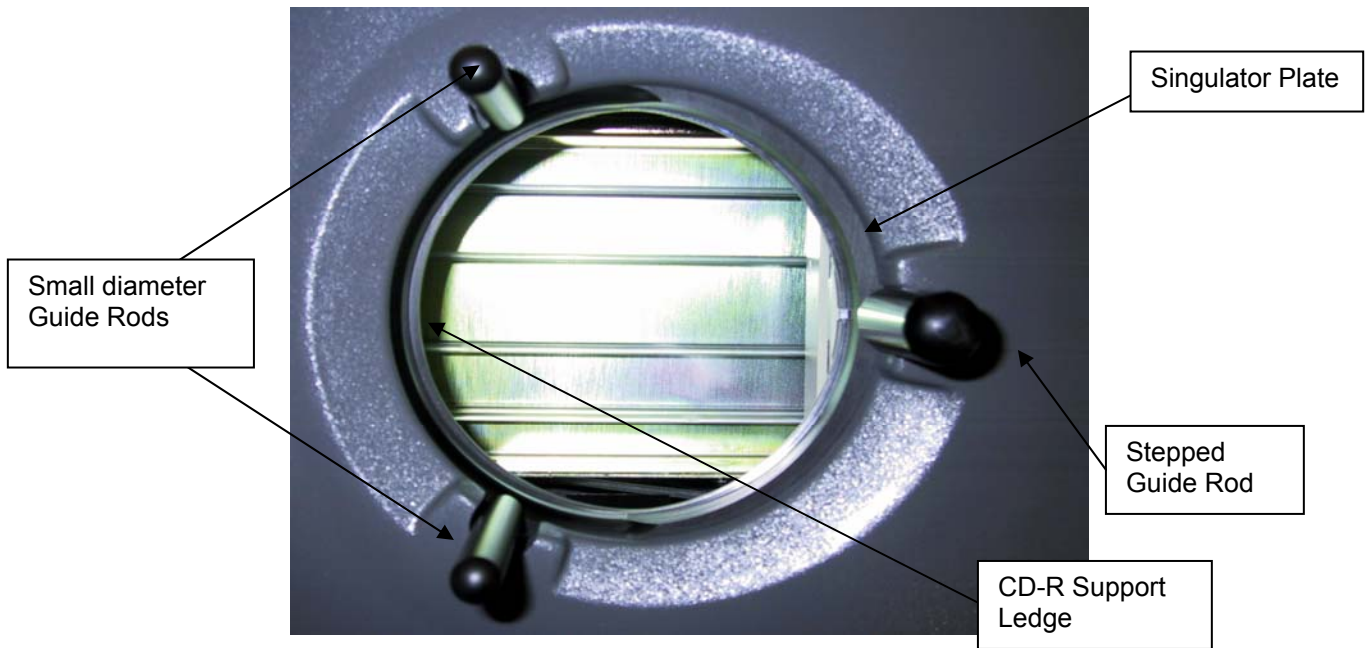
- Using the **No** key, scroll down to the last entry on the **Main Menu**. It should be
- Press the **Yes** key. This will bring you to the  menu selection.
- Press the **No** key. This will turn off the write operation and put Orbit II in what we call "simulation mode". In simulation mode all operations will be performed, but Orbit II will not write on the blank CD-Rs or CD-RWs it processes. We use this mode to test Orbit's features without wasting media.
- Press **Yes** at the  prompt to leave Orbit II's audible alarm enabled.
- At the  duplication speed prompt press **Yes**. This will keep Orbit II in its normal 52x writing mode and advance you to the prompt.  
  
(Pressing **No** at the **52x?** prompt allows you to lower Orbit II's writing speed. You would select lower writing speeds if the CD-Rs you use do not provide acceptable yield at 52x. Your Orbit II unit will automatically adjust its writing speed to the proper setting if it detects CD-RW media. You do not have to manually select a lower speed for CD-RW discs.)
- At the  prompt press **Yes**. Orbit II will ask you for a quantity each time you start a new job. If you set **Ask Quantity?** to **No** Orbit II will not ask for a quantity. It will copy or compare until the Input Hopper is empty. (See Section 7 for additional details.)

We now know that Orbit II's one line display, operating system, and two control keys operate properly. We Have turned **Burn CD? Off**, so your unit is in simulation mode. We can proceed to check out Orbit II's disc handling, reading, and writing capabilities without writing on your media.

## 5.6 Loading & Unloading CD-Rs:

### Loading CD-Rs

The Input Hopper is located on top of the Orbit II unit. Locate the parts identified in the photograph below on your Orbit II CD-to-CD Office Copier.



Because Orbit II has a separate CD Reader, you place only blank discs in the Input Hopper for **Copy CD-to-CD?** and **Copy & Compare?** operations. For **Compare CD?** operations the discs in the Input Hopper will have already been recorded. Master discs are always placed in Orbit II's CD Reader. We recommend the use of lint free gloves whenever you handle CD-Rs, because fingerprints can affect recording, playback, and printability. To avoid touching critical surfaces, handle CD-Rs by their inside and outside edges.

### Loading CD-Rs (cont)

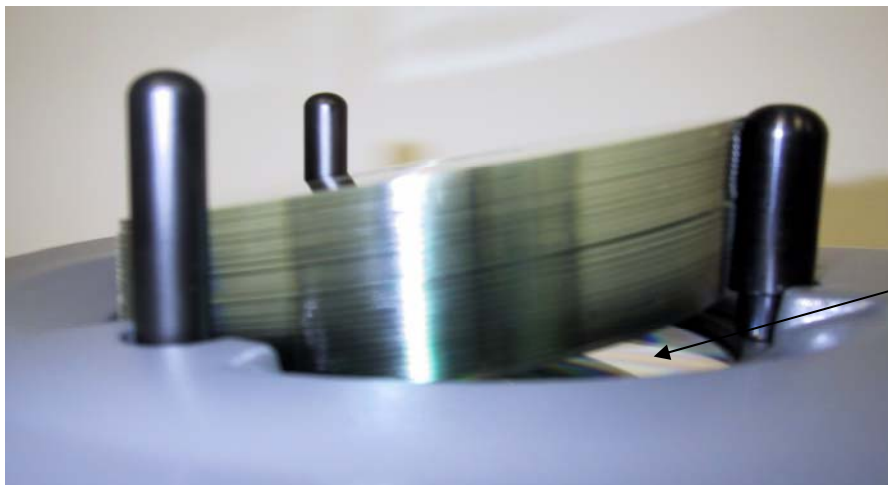
There are two ways to control how many copies Orbit II makes. If **Ask Quantity?** is turned off, you control the number of discs produced during each job by placing the appropriate number of blank CD-Rs or CD-RWs

in the Input Hopper. Orbit II stops copying when its Input Hopper is empty. Remember that there is always the possibility of a reject. If you need a specific number of copies, place one extra blank disc in the Input Hopper. If **Ask Quantity?** is turned on, you control the exact number of copies produced by setting Orbit II's counter at the start of each job. (Refer to Section 7 for details.)

Orbit II's Input Hopper can hold a maximum of 50 CD-R or CD-RW discs. Always load the first 5 or 6 CD-Rs on the Singulator Plate and Rear Support Ledge. The discs will be horizontal if loaded properly.



If the duplication job requires more than 5 or 6 CD-Rs, load the remaining CD-Rs, leaning against the Stepped Guide Rod. You can load up to a maximum of 50 CD-Rs in the Input Hopper.



The Singulator will separate the bottom disc from the stack and feed it into the CD-R Writer. The horizontal

discs will move down. The stack that is leaning against the Stepped Guide Rod may not drop a disc each singulation cycle, but there should always be at least two discs in the horizontal group.

The horizontal group should never become empty while there are discs leaning against the Stepped Guide Rod. If this happens there is a media problem. Contact Microboards Technology Technical Support for assistance. If you are running a very large duplication job (more than 50 copies of a single master) you can add discs, remove accepted discs, or remove rejected discs while the system is running.

### Loading Masters:

You may use CDs, CD-Rs, or CD-RW discs as Masters. Masters are always placed in the CD Reader located in the lower right hand corner of Orbit II's Front Panel. Because Orbit II is a CD-to-CD copier, there must always be a master in the CD Reader during copy or compare operations. When you press **Yes**

**Copy Disc-to-Disc?**

**Copy & Compare?**

**Compare? Disc-to-Disc**

prompt; Orbit II's controller will open the CD Reader for you. Load your master in the reader the same way you would load an audio CD in a CD Player.



When you are sure the master is properly loaded in the CD Reader's tray press **Yes**. Orbit II's Controller will close the Reader tray and begin the copy or compare operation you selected.

**Unloading Accepted CD-Rs:**

Orbit II accumulates accepted CD-Rs in the Accept Basket located on the left side of the Unit. We recommend the use of lint free gloves whenever you handle CD-Rs, because fingerprints can affect recording, playback, and printability. To avoid touching critical surfaces, handle CD-Rs by their inside and outside edges. You can remove accepted CD-Rs at any time, but do not try to remove them while a disc is being transferred to the Accept Basket.

**Remember; all duplicated, unprinted, CD-Rs may look the same. It is the responsibility of the operator to keep each duplicated CD-R in the proper group. It is also sometimes difficult to tell “blank” or un-duplicated CD-Rs from “burned” or duplicated CD-Rs. That is why we recommended maintaining a consistent and orderly flow of masters and duplicates in your copy area.**

**Unloading Rejected CD-Rs:**

Orbit II was designed to minimize the possibility of mixing rejected CD-Rs with masters or accepted copies. The Reject Slot is located on the right side of Orbit II. You can access rejects at any time.

**We suggest you keep a clearly labeled REJECT container in your production area so rejected discs do not get mixed with masters or accepted duplicates.**

**Unloading Masters:**

When the Input Hopper is empty, Orbit II will alert you by sounding the **Buzzer**, and scrolling an **Input Hopper Empty** message on the Display.

- If your job is not completed, load the appropriate number of discs into the Input Hopper, and press the **Yes** key to continue your job.
- If your job is done, press the **No** key again. Orbit II will open the Reader Tray so you can unload your master.
- If you are not going to do another job, unload your master and gently push the Reader tray inward until it powers itself closed.
- If you are going to start a different job, replace the master in the Reader tray, insert the desired quantity of discs in the Input Hopper, select the desired Orbit II operation, and press the **Yes** key again to close the Reader tray and start the new job.

**We suggest you keep the master disc on top of your stack of copies. This will identify the stack of discs, and keep your master available for compare operations or quality assurance tests.**

## 5.7 CD-R Handling Tests:

These tests will verify that your new Orbit II has not suffered any shipping damage that affects CD-R handling.

### Accepted Disc Test:

- Load approximately 10 blank CD-R discs in the Input Hopper. **(Remember; Burn CD? has been turned off. The discs you use for this test will not be recorded.)**
- Press the **Yes** key at the **Copy Disc-to-Disc?** prompt.
- When the **Quantity? 00** prompt appears, press **No** to set the “10s” digit to “1”, and press **Yes** to accept the “10s” digit setting. The underline cursor will move to the “1s” digit. Press the **Yes** key to accept the “0” setting and tell Orbit II you want a ten disc job.
- When the CD Reader tray opens, place a short master (you can use the Orbit II distribution disc) in the CD Reader tray and press **Yes** .
- Orbit II will perform a simulated copy operation on the 10 discs and place them in the Accept Basket.
- If all of the discs are placed in the Accept Basket, this test has been completed successfully. Proceed to the Rejected Disc Test. If you experienced CD-R handling problems in this test, contact Microboards Technology Technical Support for assistance.

### Rejected Disc Test:

- Load approximately 10 blank CD-R discs in the Input Hopper.
- Press the **No** key at the **Copy Disc-to-Disc?** and **Copy & Compare?** prompts.
- Press the **Yes** key at the **Compare? DISC-to-DISC** prompt.
- When the **Quantity? 00** prompt appears, press **No** to set the “10s” digit to “1”, and press **Yes** to accept the “10s” digit setting. The underline cursor will move to the “1s” digit. Press the **Yes** key to accept the “0” setting and tell Orbit II you want a ten disc job.
- When the CD Reader tray opens, place a short master (you can use the Orbit II distribution disc) in the CD Reader tray and press **Yes**.
- Orbit II will perform a compare operation on the 10 discs. Because they are blank it will place them on the Reject side of the Orbit 2.
- If all of the discs are placed on the Reject side, this test has been completed successfully. Proceed to the Writer and Reader Tests that follow. If you experienced CD-R handling problems in this test, contact Microboards Technology Technical Support for assistance.

## 5.8 Writer and Reader Test:

This final trial run will verify that your new Orbit II has not suffered any shipping damage that affects either the Writer or the Reader. You will make a back up copy of the Orbit II distribution CD-R, and you will compare the copy to the master CD-R. You must first change Orbit II's Setup so that **Burn CD?** is turned on:

### Turn **Burn CD?** on:

- Press the **No** key at the **Copy DISC-to-DISC?**, **Copy & Compare?** and **Compare? DISC-to-DISC** prompts.
- Press the **Yes** key at the **Burn Disc?**, **Use Buzzer?**, **52x Write?**, and **Ask Quantity?** prompts.

This sequence will return you to the **Copy Disc-to-Disc?** prompt with **Burn CD?** on.

### Copy the distribution disc:

- Make sure there is one blank (unrecorded) CD-R in the Input Hopper.
- Press the **Yes** key at the **Copy Disc-to-Disc?** prompt.
- When the **Quantity? 00** prompt appears, press **Yes** to accept the "10s" digit setting of "0". The underline cursor will move to the "1s" digit. Press the **No** key once to set the "1s" digit to "1". Press **Yes** to accept the "1s" digit setting of "1".
- When the CD Reader tray opens, place the Orbit II distribution disc in the CD Reader tray and press **Yes**.
- Orbit II will copy the distribution disc to the blank CD-R and place it in the Accept Basket.

Verify the distribution disc was copied properly:

- Take the distribution disc copy from the Accept Basket and place it in the Input Hopper.
- Press the **No** key at the  and **Copy & Compare?** prompts.
- Press the **Yes** key at the **Compare? Disc-to-Disc** prompt.
- When the **Quantity? 00** prompt appears, press **Yes** to accept the “10s” digit setting of “0”. The underline cursor will move to the “1s” digit. Press the **No** key once to set the “1s” digit to “1”. Press **Yes** to accept the “1s” digit setting of “1”.
- When the CD Reader tray opens, place the Orbit II distribution disc in the CD Reader tray and press **Yes**.
- Orbit II will compare the master distribution disc to the copy, and place the copy in the Accept Basket if it passes the content verification test.

You can use this same test sequence to troubleshoot problems with your Orbit II System prior to calling for technical assistance. If you are trying to isolate media quality problems, substitute reference media for discs that have a high reject rate. If you suspect problems with a particular master, substitute a reference master. (You can use your distribution disc as a reference master.) If the term “reference media” or “reference master” is new to you, refer to Sections 3 & 4 of this manual.

When your Orbit II System passes the disc handling, writer, and reader tests it is ready for use. Proceed to Section 6 *Basic Orbit II Operation*.

If your Orbit II System does not pass the disc handling, writer, or reader test contact your Microboards Technology Technical Support for assistance.

## Section 6.0 Basic Orbit II Operations :

Orbit II was designed to be as easy to use as an office copier for paper documents. Making copies of a master Disc takes only a few simple steps; load the number of blank discs you want to copy, select **Copy DISCtoDISC ?** by pressing the **Yes** key, insert your master in Orbit II's DVD Reader, and press the **Yes** key again. Orbit II will copy the master disc on to blank discs until its Input Hopper is empty. Because all operating mechanisms are fully enclosed; you can add discs to the Input Hopper, remove discs from the Accept Basket, or remove Discs from the Reject side at any time. Your master disc can be a CDROM, CD-R or CD-RW disc. There are three Orbit II operating modes, **Copy?**, **Copy & Compare?**, and **Compare Disc?**.

The **Copy** mode has three options, Disc to Disc, Disc to HDD and HDD to Disc. The Orbit II has an internal hard drive that stores up to 10 different images.

There are two different ways you can set up your Orbit II, depending upon how you intend to use it. If **Ask Quantity?** is turned on, Orbit II will ask the operator how many discs should be processed for each job. In this operating mode you can leave a stack of blank discs in the Input Hopper. Orbit II will always provide the requested number of discs, even if some discs are rejected during the job. If **Ask Quantity?** is turned off, Orbit II will not request a quantity from the operator. Orbit II will expect the operator to place the proper number of discs in the Input Hopper before starting the job. If there are rejects, and a specific quantity of discs is needed, the operator will have to add additional discs during the job, or set up another job when the first job is complete. See Section 7 for additional details on the **Ask Quantity?** option.

### 6.1 Copy DISCtoDISC?:

This Orbit II operating mode is the easiest to use because it is the main menu selection that Orbit II presents when it completes its power on self-test. A "copy only" operation is the most common form of disc duplication. In **Copy ?** mode Orbit II does not verify the content of each data sector recorded. The example shown below assumes **Ask Quantity?** is turned on.

To initiate a **Copy ?** operation:

- Make sure there are enough discs in the Input Hopper.
- Press the **Yes** key at the  prompt.
- When the  **Quantity? 00** prompt appears, use the **Yes** and **No** keys to set the required number of discs in Orbit II's counter. Pressing the **Yes** key accepts the number above the underline cursor, and tells Orbit II you are ready for the next operation. Pressing the **No** key increments the number above the underline cursor. (If you accidentally press the **Yes** key at the "10s" digit and move to the "1s" digit before you are ready, you can get the cursor back to the "10s" digit by pressing the **No** until the "1s" digit changes from "9" to "0".)
- When the DVD Reader tray opens, place your master in the DVD Reader tray and press **Yes**.
- Orbit II will copy the master disc on to the blank discs until the requested number of discs are accepted.
- You can add discs to the Input Hopper, remove discs from the Accept Basket, or remove Discs from the Reject side at any time.

## 6.2 Copy DISCtoHDD?:

The Copy DISCtoHDD function allows you to copy your master disc to one of the 10 partitions of the internal hard drive. Once the master is copied to the hard drive, your copies will be made. To use this function:

- Press the **No** key at the **Copy DiscToDisc?** **Copy and Compare?** and **Compare Disc?** prompts.
- Press the **Yes** key at the  prompt.
- Press **NO** at the **Disc to Disc?** prompt.
- Press **YES** at the **Disc to HD?** prompt.
- Next, choose the hard drive partition you wish to store your master. **HD1?**
- When you select a partition, it will show you if there is data already stored on that partition. If there is no data on that partition, it will show **FREE**. If there is data on the partition, you can overwrite it by selecting **YES**.
- Once the partition is selected, press the **YES**.
- Press **YES** to **Burn Disc?** **Use Buzzer?**

and

prompts.

- Place your blank discs into the input hopper.
- The display will now show **Copy? DISCto HD1**
- Press the **YES** button.
- Load the master disc into the reader and press the **YES** button.
- The master disc will now be loaded into the hard drive.
- Once completed, the blank discs will be recorded to.

### 6.3 Copy HDDtoDISC?:

The Copy HDDtoDISC function allows you to copy any image that has been stored on the internal hard drive to a disc. To use this function:

- Press the **No** key at the **Copy DisctoDisc?** and **Copy and Compare?** and **Compare Disc?** prompts.
- Press the **Yes** key at the [ ] prompt.
- Press **NO** at the **Disc to Disc?** and **Disc to HD?** prompts.
- Press **YES** at the **HD to DISC?** prompt.
- Next, choose the hard drive partition you wish to copy. **HD1?**
- When you select a partition, it will show you if there is data already stored on that partition. If there is no data on that partition, it will show FREE.
- Once the partition is selected, press the **YES**.
- Press YES to **Burn Disc?** and **Use Buzzer?** and **52x CD Write?** and **Ask Quantity?** prompts.
- Place your blank discs into the input hopper.
- The display will now show **Copy? HD1 to Disc**
- Press the YES button.
- The blank media will now be loaded into the recorder.

## 6.4 Copy and Compare?:

This Orbit II operating mode compares the content of the master disc to each disc you copy, before the disc is placed in the Accept Basket. Following every copy operation with a compare operation gives you the highest confidence in the discs you copy and distribute. The Compare operation works with both data and audio masters. Data masters will be verified, bit for bit, against the master. Audio masters, or masters that contain audio (such as CD Extra), will go through a “Read Check”. This read check will verify that the duplicated disc can be read and has the same structure as the master. Because there is audio on the disc, it cannot be “bit for bit” verified. We suggest you use Orbit II’s **Copy and Compare?** Mode:

- When you want the highest level of confidence in the copies you produce.
- Your Orbit II is new, has been moved to a new location, or has been returned from servicing.
- You are using a master from a new source.
- You are qualifying a new source of blank discs.

Compare operations are performed at approximately the same rate as copy operations. Using Orbit II’s **Copy and Compare?** Operation will reduce the number of discs you can produce in a given amount of time by approximately 50%.

The example shown below assumes **Ask Quantity?** is turned on.

To initiate a **Copy and Compare?** operation:

- Make sure there are enough blank CD-R or CD-RW discs in the Input Hopper.
- Press the **No** key at the  prompt.
- Press the **Yes** key at the  **Copy & Compare?** prompt.
- When the  **Quantity? 00** prompt appears, use the **Yes** and **No** keys to set the required number of discs in Orbit II’s counter. Pressing the **Yes** key accepts the number above the underline cursor, and tells Orbit II you are ready for the next operation. Pressing the **No** key increments the number above the underline cursor. (If you accidentally press the **Yes** key at the “10s” digit and move to the “1s” digit before you are ready, you can get the cursor back to the “10s” digit by pressing the **No** until the “1s” digit changes from “9” to “0”.)

- When the CD Reader tray opens, place your master in the CD Reader tray and press **Yes**.
- Orbit II will copy the master disc, and then compare the master disc to the recorded discs, until the requested number of discs are accepted.
- You can add discs to the Input Hopper, remove discs from the Accept Basket, or remove Discs from the Reject area at any time.

## 6.5 Compare CD?:

This Orbit II operating mode compares the content of the master disc to each recorded disc in the Input Hopper. The Compare operation works with both data and audio masters. Data masters will be verified, bit for bit, against the master. Audio masters, or masters that contain audio (such as CD Extra), will go through a “Read Check”. This read check will verify that the duplicated disc can be read and has the same structure as the master. Because there is audio on the disc, it cannot be “bit for bit” verified. If you are using Orbit II’s **Copy CD-to-CD?** mode we suggest you periodically perform a verify operation on some of the discs you copy to make sure your Orbit II is functioning properly.

Compare operations are performed at approximately the same rate as copy operations. Using Orbit II’s **Compare?** Operation will take approximately as long as it does to copy the discs at 52x.

The example shown below assumes **Ask Quantity?** is turned on.

To initiate a **Compare CD?** operation:

- Load the appropriate number of recorded CD-R or CD-RW discs in the Input Hopper
- Press the **No** key at the  prompt.
- Press the **No** key at the  prompt.
- Press the **Yes** key at the  prompt.
- When the  prompt appears, use the **Yes** and **No** keys to set the required number of discs in Orbit II’s counter. Pressing the **Yes** key accepts the number above the underline cursor, and tells Orbit II you are ready for the next operation. Pressing the **No** key increments the number above the underline cursor. (If you accidentally press the **Yes** key at the “10s” digit and move to the “1s” digit before you are ready, you can get the cursor back to the “10s” digit by pressing the **No** until the “1s” digit changes from “9” to “0”.)
- When the CD Reader tray opens, place your master in the CD Reader tray and press **Yes**.
- Orbit II will compare the master disc to the recorded discs in the Input Hopper until the requested number of discs are accepted.
- You can add discs to the Input Hopper, remove discs from the Accept Basket, or remove Discs

from the Reject area at any time.

## **6.6 Copy CD+G**

Copy CD+G is used to copy CD+G or Karaoke CD discs. The copy function is the same as copying data or audio CD's, as described in section 6.1. If you wish to copy CD+G discs, you must select this function. If you use the Copy CD to CD function, the graphics portion of the CD will not be copied. Copy and Compare and Compare functions are not available when copying CD+G discs.

## Section 7.0 Advanced Orbit II Operation:

There are three advanced Orbit II operation options, Burn CD?, Use Buzzer?, and Write Speed?. You put your Orbit II in its “simulate” mode by switching Burn CD? to No when you followed the installation procedure in Section 5 of this manual. Burn CD? must be set to Yes for all copy operations.

The **Use Buzzer?** Setup menu selection allows you to turn off Orbit II's audible alarm. If Orbit II's buzzer is disabled, a flashing LED will be the only indication that the Input Hopper is empty, or there is a problem with the current job. If the buzzer is enabled, you can silence the audible alarm by pressing the **No** key.

Set **Write Speed?** to the copy speed you want to use. Normally you should leave the write speed at 52x to maximize the number of CD-Rs you can write per hour. In order to run at 52x, it is important to make sure you are using blank CD-R media that is rated for 52x. If you are experiencing a high reject rate (also called “low yield”) with a particular batch of media, try lowering the copy speed to 16X.

### Special Notes:

- If you are copying to CD-RW discs, the maximum copy speed is 10X.
- Orbit II will automatically adjust its copy speed if you load CD-RW discs instead of CD-R discs. You do not have to manually change **Write Speed?** to switch between CD-R and CD-RW jobs.
- CD-RW discs must be blank for use in Orbit II. Orbit II cannot erase or over-write CD-RW media.

There are two different ways you can set up your Orbit II, depending upon how you intend to use it. If **Ask Quantity?** is turned on, Orbit II will ask the operator how many discs should be processed for each job. In this operating mode you can leave a stack of blank CD-Rs in the Input Hopper. Orbit II will always provide the requested number of discs, even if some discs are rejected during the job. If **Ask Quantity?** is turned off, Orbit II will not request a quantity from the operator. Orbit II will expect the operator to place the proper number of discs in the Input Hopper before starting the job. If there are rejects, and a specific quantity of discs is needed, the operator will have to add additional discs during the job, or set up another job when the first job is complete. See Section 7 for additional details on the **Ask Quantity?** option.

## **Section 8 Maintenance**

### **8.1 Routine Maintenance:**

The Orbit II Stand Alone CD-to-CD Office Copier is designed to provide years of trouble free service without routine maintenance. The key to long life and reliable operation is to keep the work area, and the Orbit II, free of dust and debris.

To clean the outside cabinet and plastic panel:

- Turn off Orbit II's external power supply.
- Use a clean lint free cloth moistened with a weak solution of dishwashing detergent in warm water.
- Dry the unit immediately with a clean lint free cloth.

If debris accumulates within the Orbit II Loader you should gently wipe the affected surfaces with a lint free cloth, use a small shop vacuum, and/or blow out the contamination with compressed air. Make sure all of your blank media, masters, and copies are protected while you are cleaning your Orbit II System.

## **Section 9 Troubleshooting:**

If you encounter operational problems with your Orbit II System please try to isolate the problem, for example:

- Singulating and feeding CD-Rs Reading in a particular master.
- High CD-R/CD-RW disc reject rate.
- Duplicates fail on target system.
- Discs do not go all the way to the Accept Basket
- Discs do not go all the way to the Reject side

There are no end user serviceable components in the Orbit II.

The Menu Tree, Functional Schematic, and Error Code List included as attachments may help you isolate the source of a problem, and identify corrective action. If you cannot resolve the problem yourself, contact Microboards Technology Technical Support.

## Section 10 Prior to Calling for Assistance

The Microboards Technology Technical Service Team want to get your Orbit II unit back in operation as quickly as possible. There are a few things you can do to make the assistance call as short and effective as possible:

Call from a telephone near your Orbit II System.

Have this Orbit II Reference Manual available.

Have the following information available:

Date of purchase	_____
Who you purchased the system from	_____
Serial Number	_____
Problem description	_____
_____	_____
_____	_____

Have your system turned on and ready for use.

We want you to be completely satisfied with your Microboards Technology Orbit II Stand Alone CD-to-CD Office Copier. Please the Microboards Technology Technical Services Group if you have any problems.

## **Section 11 References**

### **11.1 Warranty**

Your Microboards Technology Orbit II Stand Alone CD-to-CD Office Copier has a one year parts and labor warranty. All repairs will be made at Microboards Technology's. The unit must be shipped in its original shipping carton to maintain warranty coverage. Prior to shipping the unit back to Microboards Technology you must contact the Technical Services Group for an RMA #. This number must appear on the shipping carton to assure proper processing. You are responsible for the shipping and insurance charges on equipment returned for analysis or repair. After repairs are complete the Microboards Technology Technical Services Group will contact you to let you know the unit is ready to be returned. Microboards Technology will pay for returning the unit to you by standard ground shipment. If you want to expedite return shipment, you can authorize special charges when the TSG representative contacts you.

### **11.2 Technical Support Telephone #:**

To reach Microboards Technology Technical Support, please call 952-556-1639.

### **11.3 Regulatory Agency Approvals:**

This version of the Orbit II Reference Manual is intended for early production units. The Microboards Technology Orbit II Stand Alone CD-to-CD Office Copier was designed to conform to applicable sections of UL, FCC, CSA, TUV, and CE safety and EMC requirements. Formal agency approval is pending.

## 11.4 Specifications:

**Capacity:** 50 CD-Rs

**Media:** CD-Rs or CD-RWs can be used as masters, or blanks. “Packet format”, which is used on many CD-RW discs, is not supported by the Orbit II Controller. It should also be noted that copying to blank CD-RW discs reduces throughput because the recording operation is slower.

<b>Formats:</b>	CD ROM Mode 1	Mixed Mode
	CD-XA Mode 2 form 1 & 2	Hybrid
	ISO 9660	HFS
	UFS	Photo CD
	CD-DA (Red Book) Single Session	CD-I Bridge
	CD-Extra / CD Plus / CD-Enhanced	Video CD
	Multi Session	CD+G Karaoke

**Note:** Packet mode is not supported for CD-Rs or CD-RWs.

**Masters:** Disc-At-Once  
 Session-At-Once  
 Track-At-Once

**Notes:**

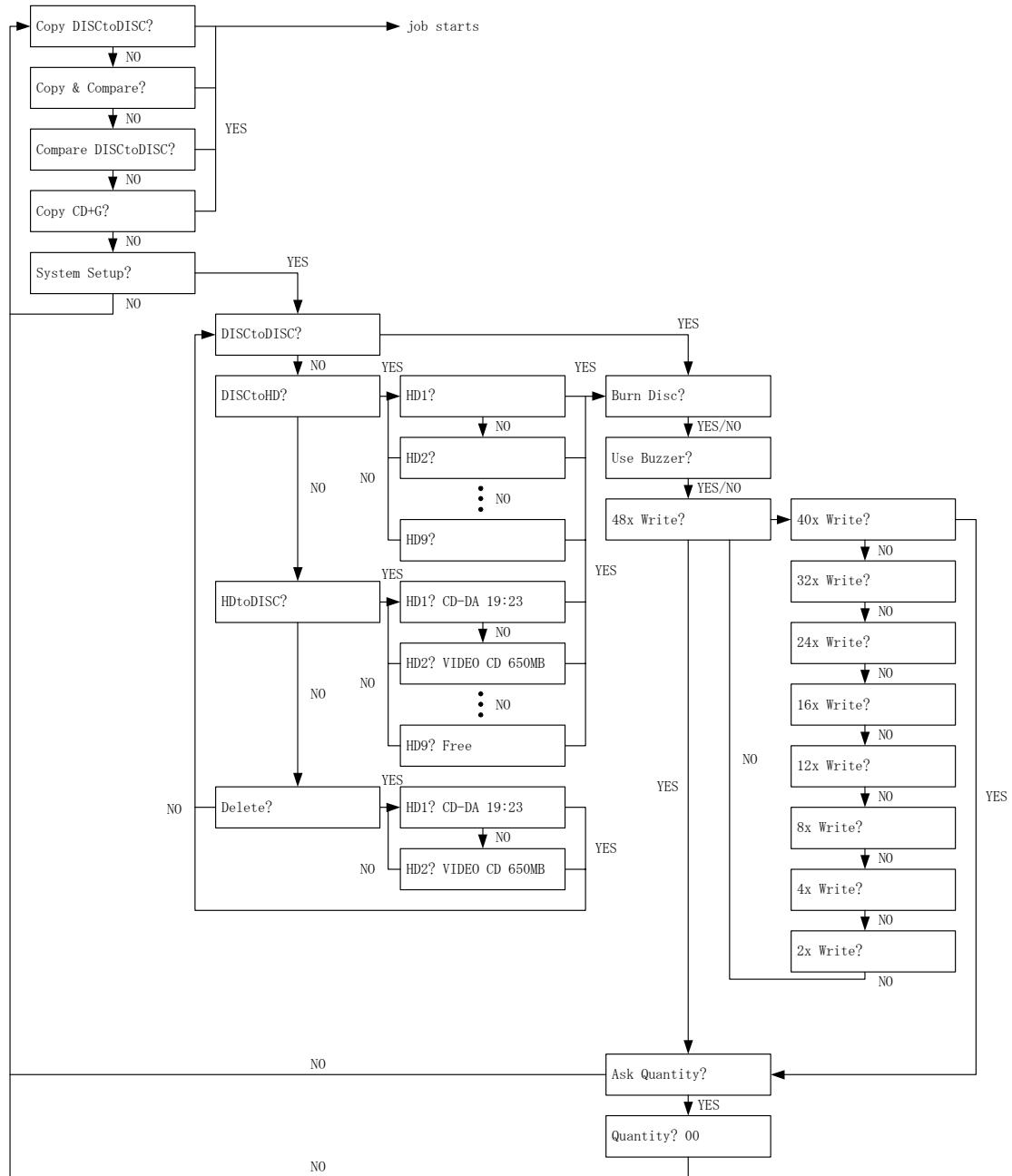
- ✓ Discs left open on masters will be left open on the duplicates.
- ✓ Discs are always written disc at once.

<b>Reliability:</b>	Mean Disc Insertions Between Failure	>200,000
	MTBF	>10,000 hours
	MTTR	<30 minutes

<b>Mechanical:</b>	H x W x D	9" x 18" x 12" (23 cm x 46 cm x 30.5 cm)
	Weight	Shipping 30 lb (13.6 kg) Operating without CD-Rs 20 lb (9.1 kg)

**Electrical:** External Power Supply 100 – 240 VAC, 50/60 Hz, 1.0/0.5 Amps 100 Watts

<b>Environment:</b>	Temp. – Operating	65 – 85 degrees F (18 – 29 degrees C)
	Temp. – non Op.	-44–176 degrees F (-40– 80 degrees C)
	RH Operating	20 – 80 % non-condensing
	RH Storage	05 – 95 %
<b>Vibration:</b>	Operating	> 0.3 G (5 – 30 Hz)
	Non-Operating	> 0.5 G (11 msec max.)
<b>Shock:</b>	Operating	> 5 G (11 msec max)
	Non-Operating	> 50 G (11 msec max)
<b>Altitude:</b>	Operating	10,000 ft (3,048 meters)
	Non-Operating	30,000 ft (9,144 meters)

**Attachment A Orbit II's menu structure:**


## Attachment A Orbit II Error Messages

<b>Error Message:</b>	<b>Problem Description:</b>
<b>!! Bad Copy!!</b>	The copy CD is bad and will be rejected. This message may briefly appear during any of Orbit II's operating modes.
<b>!!ERROR!! No CD Reader!</b>	This message would appear during a power on self-test if the copy controller did not locate a compatible CD Reader. Contact Microboards Technology Technical Support.
<b>!!ERROR!! No CD-R Drives!</b>	This message would appear during a power on self-test if the copy controller did not locate a compatible CD-R/CD-RW Writer. Contact Microboards Technology Technical Support.
<b>!!ERROR!! Disc is Blank!</b>	This message would appear at the start of a copy or compare job if the copy controller could not read the disc that is in the CD Reader. Check your master CD, CD-R, or CD-RW discs, and try again. If this message persists, contact Microboards Technology Technical Support.
<b>Setup Error</b>	The user Setup file has been corrupted. Turn the external power supply OFF, and leave it OFF for a few moments. When you turn your Orbit II System back ON it will reset the user Setup file to the factory default values of <b>Burn CD? Yes</b> and <b>52x Write? Yes</b> . If you are not using these default settings, make the appropriate <b>System Setup?</b> changes before you use your Orbit II System.
<b>!!WARNING!! Copier is in SIMULATE mode</b>	Your Orbit II System Setup has been changed to <b>Burn CD? No</b> . If you want to proceed with the operation you selected press the <b>Yes</b> key. If you do not want to proceed in simulate mode, press the <b>No</b> key and change the <b>System Setup?</b> .